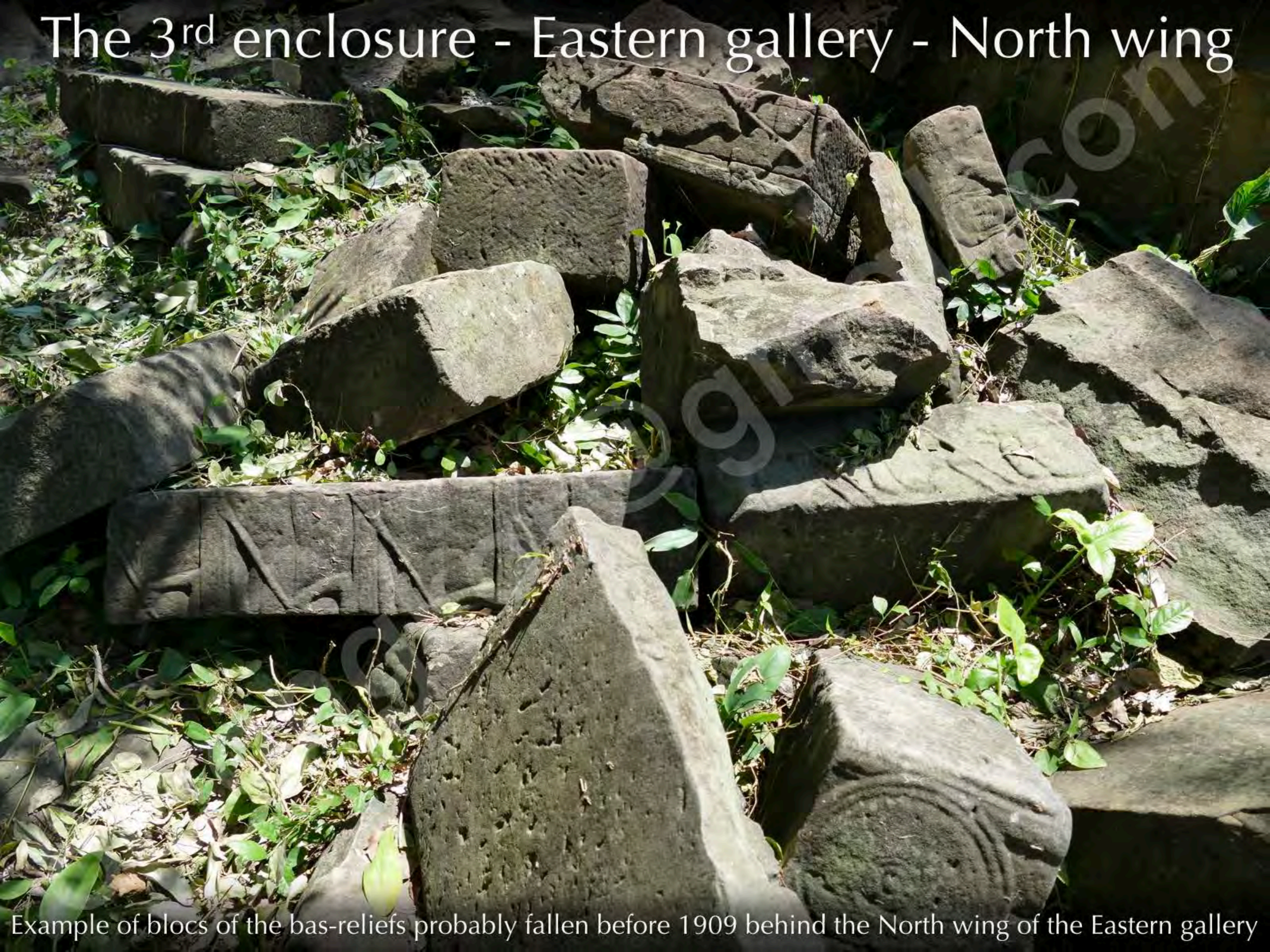


# The 3<sup>rd</sup> enclosure - Eastern gallery - North wing



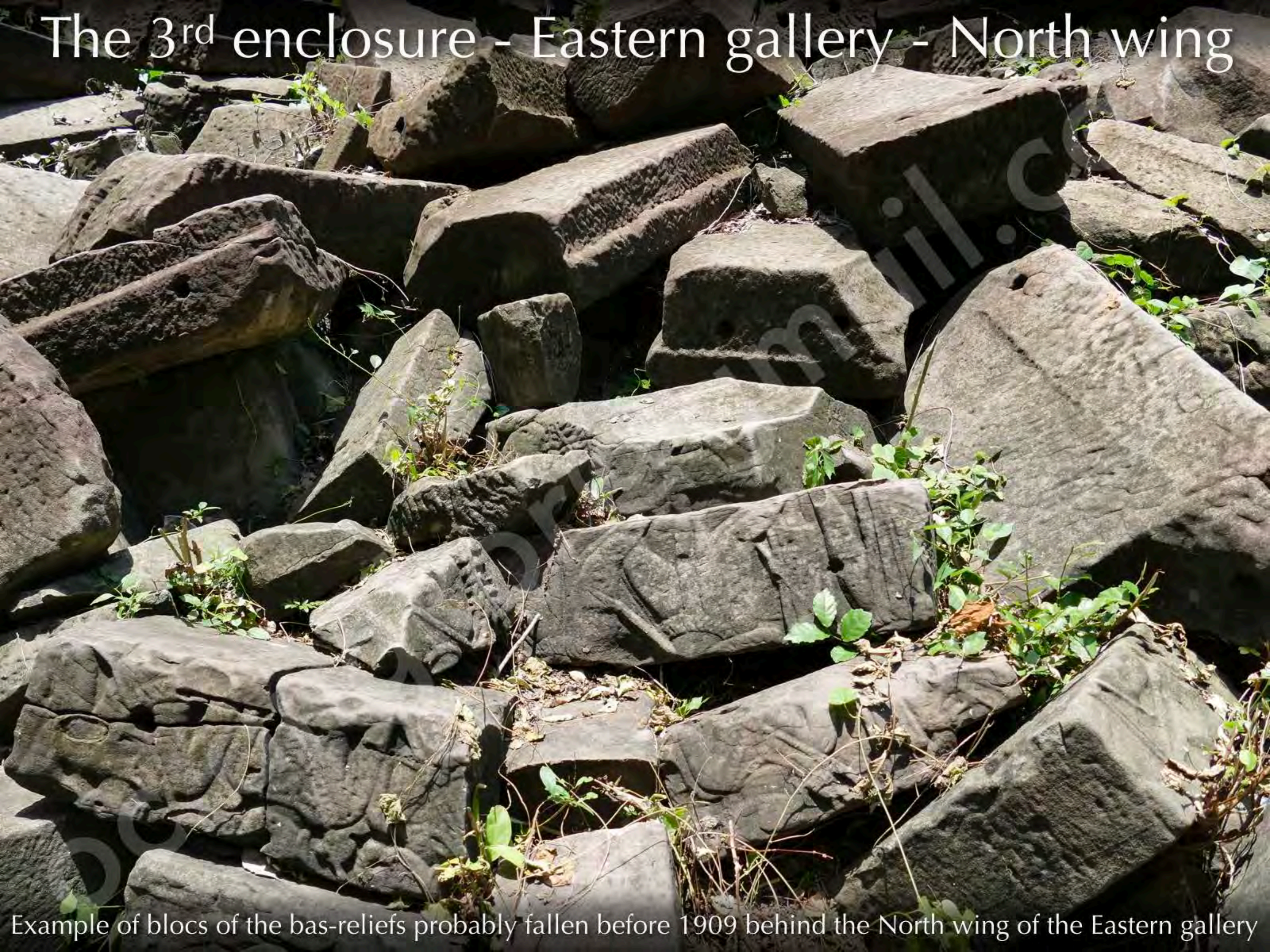
Example of blocs of the bas-reliefs probably fallen before 1909 behind the North wing of the Eastern gallery

# The 3<sup>rd</sup> enclosure - Eastern gallery - North wing



Example of blocs of the bas-reliefs probably fallen before 1909 behind the North wing of the Eastern gallery

# The 3<sup>rd</sup> enclosure - Eastern gallery - North wing



Example of blocs of the bas-reliefs probably fallen before 1909 behind the North wing of the Eastern gallery

# The 3<sup>rd</sup> enclosure - Eastern gallery - North wing



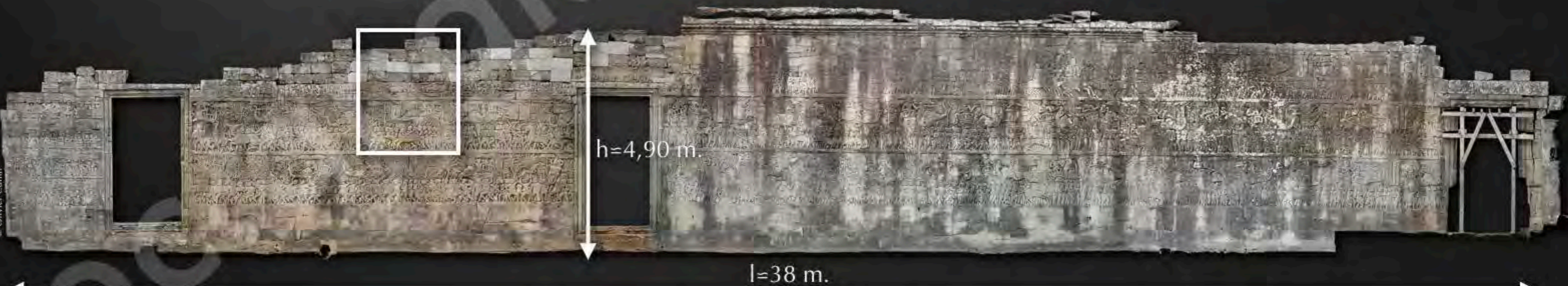
© Olivier Cunin

Brahmins greeting king Jayavarman VII in front of a bronze artefact (?) overcome by a Shiva Nataraja



© Olivier Cunin

Banteay Chhmar - Eastern gallery - North wing - South end  
(These bas-reliefs are not documented at the photos archives of EFEO)



h=4,90 m.

l=38 m.

The Bayon - Southern outer gallery - East wing

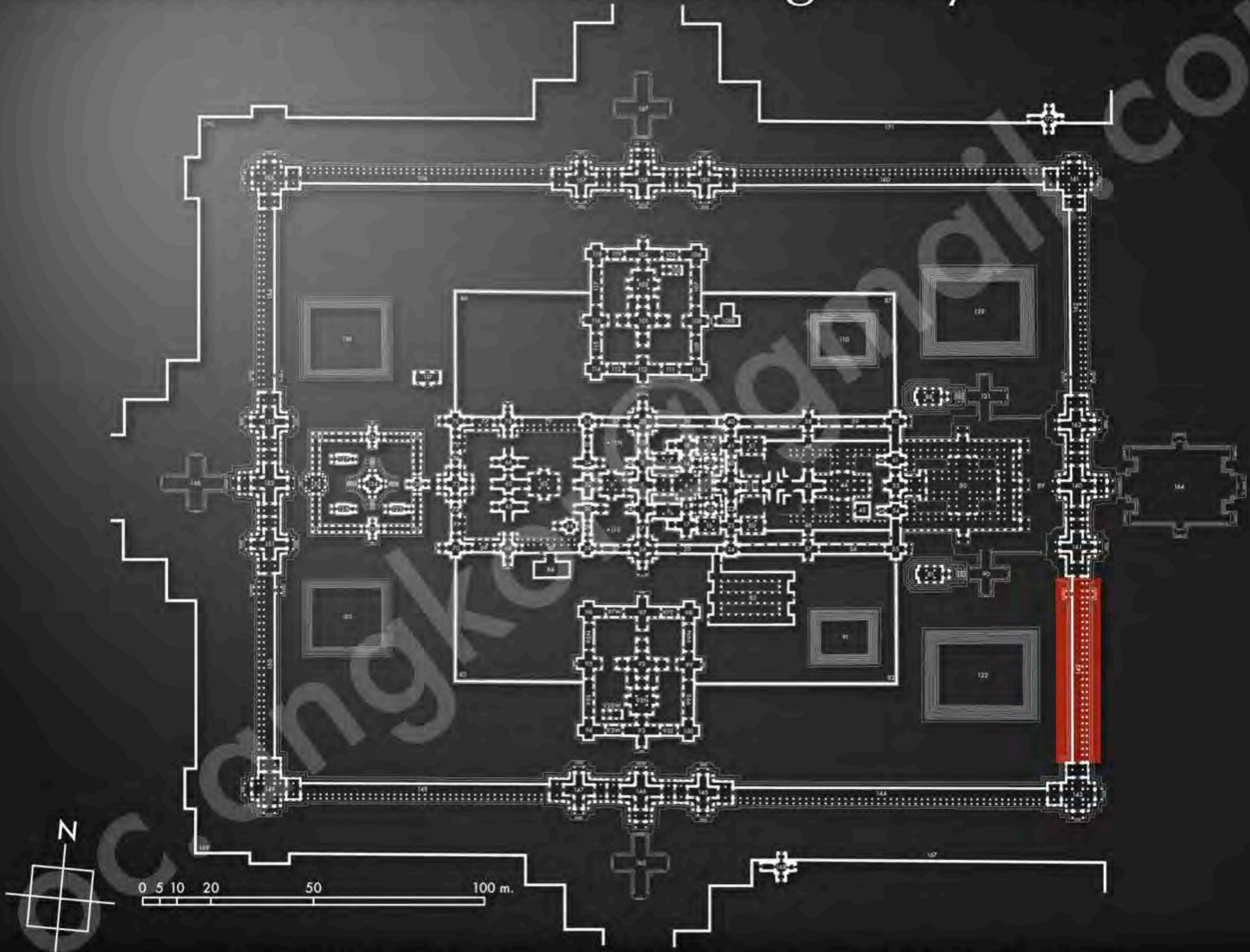
Correspondance between the bas-reliefs of the Bayon and Prasat Bantheay Chhmar

# The 3<sup>rd</sup> enclosure - Eastern gallery - North wing



- 70% of surface of the masonry of the wall of the bas-reliefs are currently collapsed
- 91% of surface of the narrative are unknown and not documented
- Unsafe access for the tourists

# The 3<sup>rd</sup> enclosure - Eastern gallery - South wing



General layout of the temple complex of Prasat Banteay Chhmar

# The 3<sup>rd</sup> enclosure - Eastern gallery - South wing



Current condition of the South wing of the Eastern gallery  
View from North to South (September 2015)



Current condition of the South wing of the Eastern gallery  
View from South to North (September 2015)

# The 3<sup>rd</sup> enclosure - Eastern gallery - South wing



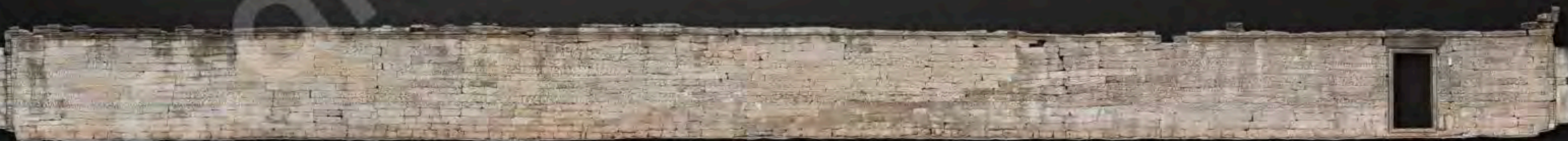
Condition in 1909 of the West end of the South wing of the Eastern gallery  
(Photomontage of the photos of General de Beylié from the photos archives of the EFEO)



Condition in 1965 of the West end of the South wing of the Eastern gallery  
(Photomontage of the photos of Luc Ionesco from the photos archives of the EFEO)



Condition in 2002 of the West end of the South wing of the Eastern gallery



Orthophoto of the current condition of the South wing of the Eastern gallery after restored by the GHF between 2008 and 2015



# The 3<sup>rd</sup> enclosure - Eastern gallery - South wing



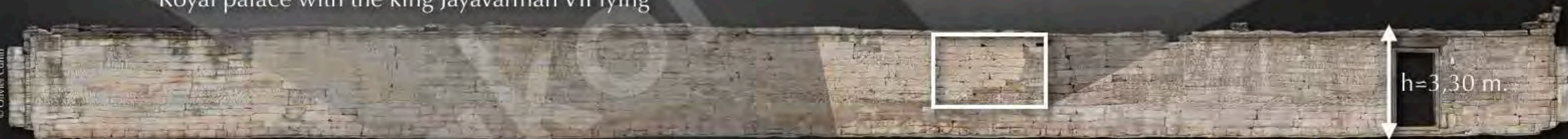
Carving of the king unfinished



Carving of the king finished

Royal palace with the king Jayavarman VII lying

Royal palace with the king Jayavarman VII lying



l=54 m.

h=3,30 m.

Banteay Chhmar - the 3<sup>rd</sup> enclosure - Eastern gallery - South wing



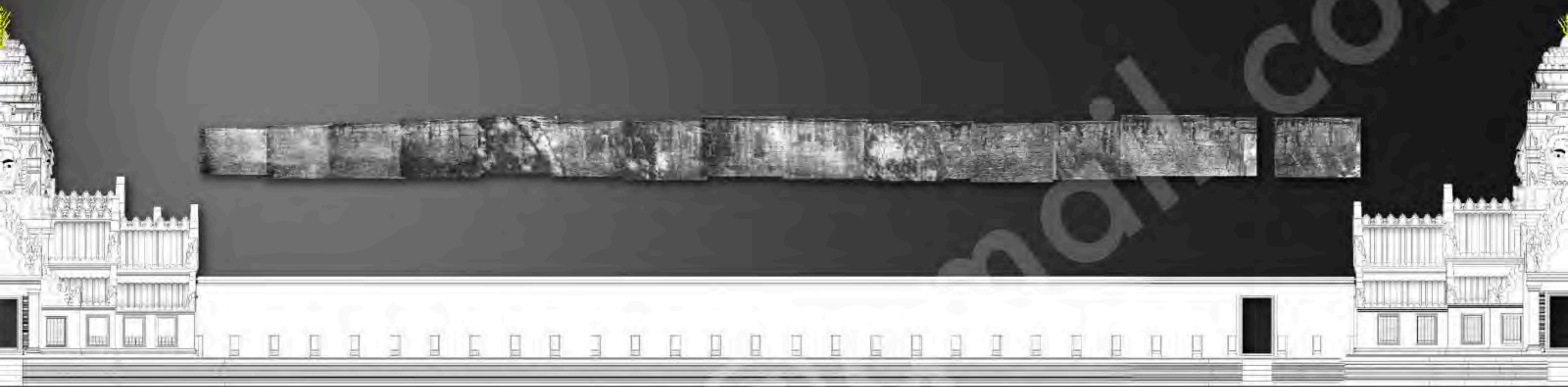
l=46 m.

h=4,90 m.

The Bayon - Southern outer gallery - East wing

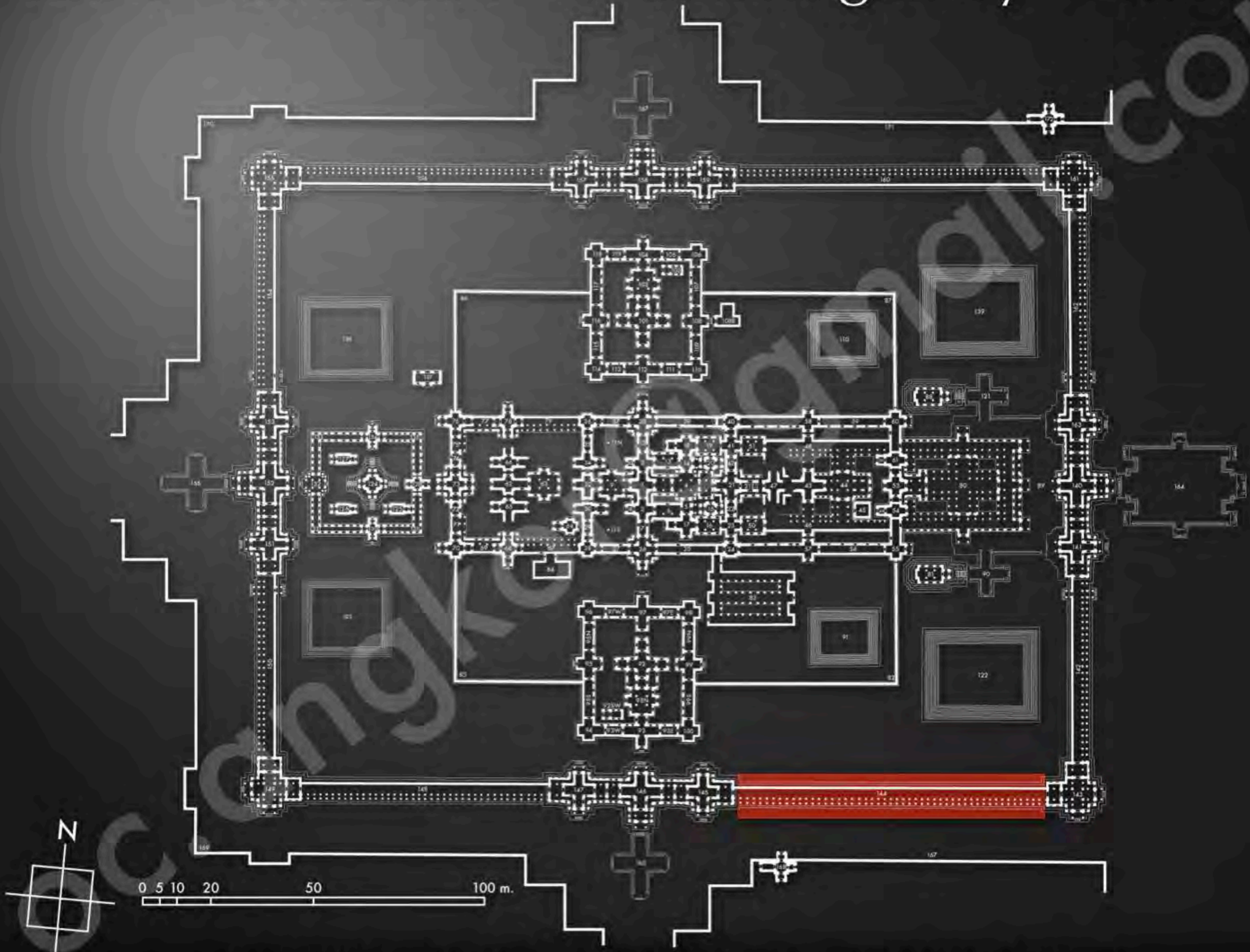
Examples of the correspondance between the bas-reliefs of the Bayon and Prasat Bantheay Chhmar

# The 3<sup>rd</sup> enclosure - Eastern gallery - South wing



- 100% of surface of the masonry of the wall of the bas-reliefs are currently standing
- 100% of surface of the narrative are known since 1909
- Safe access for the tourists

# The 3<sup>rd</sup> enclosure - Southern gallery - East wing



General layout of the temple complex of Prasat Banteay Chhmar

# The 3<sup>rd</sup> enclosure - Southern gallery - East wing



Current condition of the East wing of the Southern gallery  
View from East to West (September 2015)



Current condition of the East wing of the Southern gallery  
View from West to East (September 2015)

# The 3<sup>rd</sup> enclosure - Southern gallery - East wing

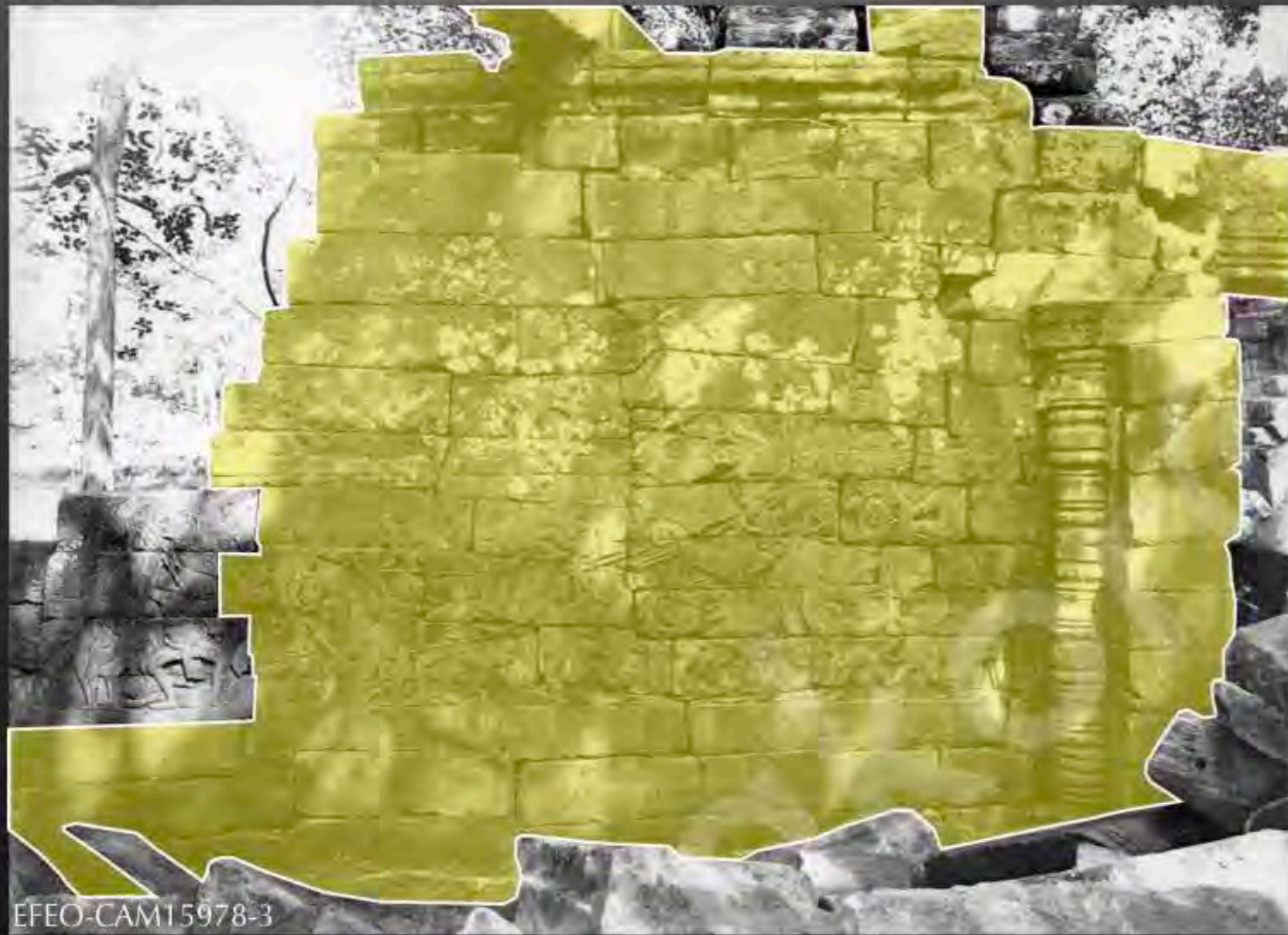


Condition in 1909 of the East end of the East wing of the Southern gallery  
(Photos of de General Beylié from the photos archives of the EFEO)




3D scanning by photogrammetry of the current condition of the  
East end of the East wing of the Southern gallery

# The 3<sup>rd</sup> enclosure - Southern gallery - East wing



Condition in 1909 of the East end of the East wing of the Southern gallery  
(Photos of de General Beylié from the photos archives of the EFE0)

 Masonry still in place today



3D scanning by photogrammetry of the current condition of the  
East end of the East wing of the Southern gallery

# The 3<sup>rd</sup> enclosure - Southern gallery - East wing



Example of blocs of the bas-reliefs fallen before 1909 of the East wing of the Southern gallery

# The 3<sup>rd</sup> enclosure - Southern gallery - East wing



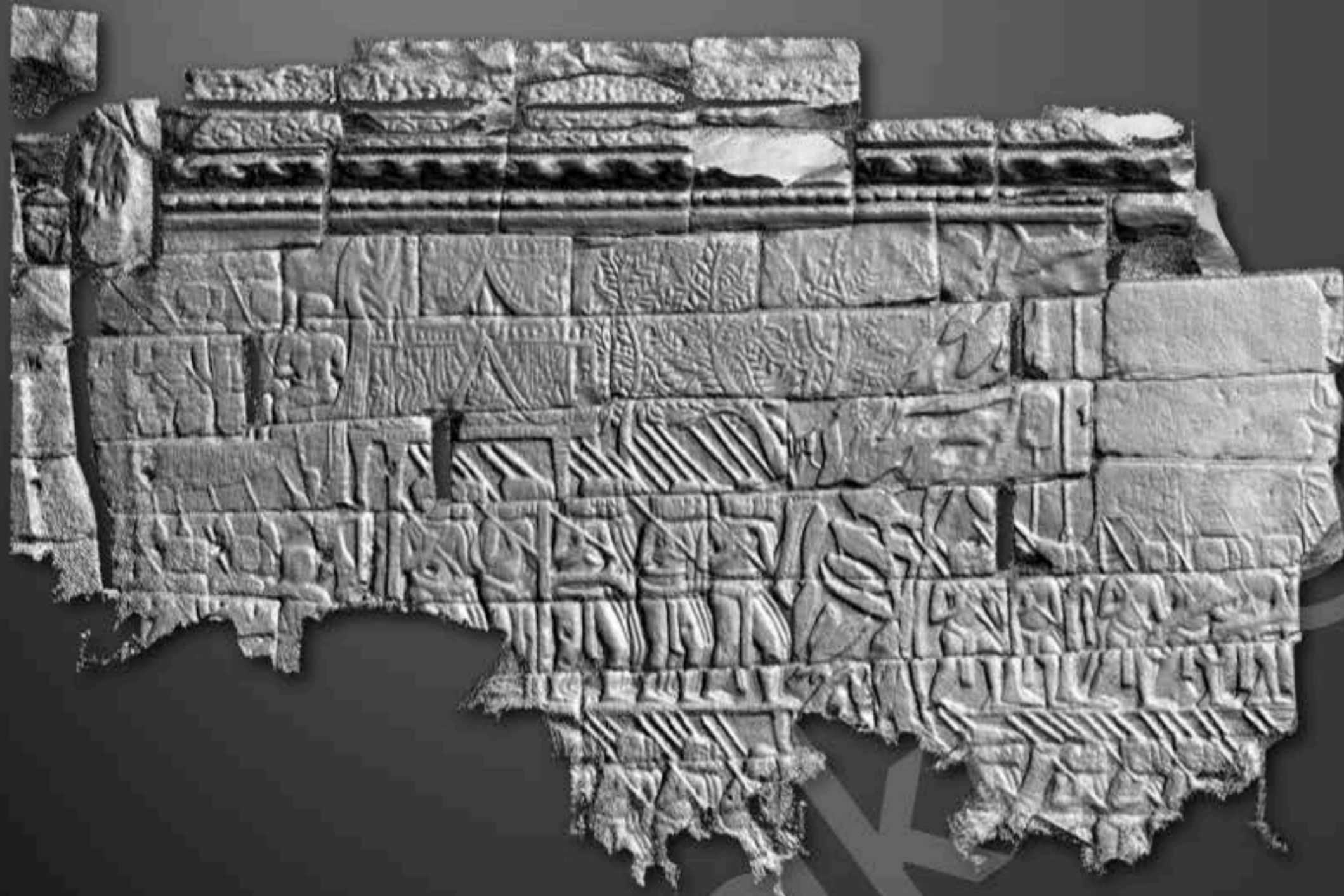


# The 3<sup>rd</sup> enclosure - Southern gallery - East wing



Photo of the current condition of the side nave of the East wing of the Southern gallery (Septembre 2015)

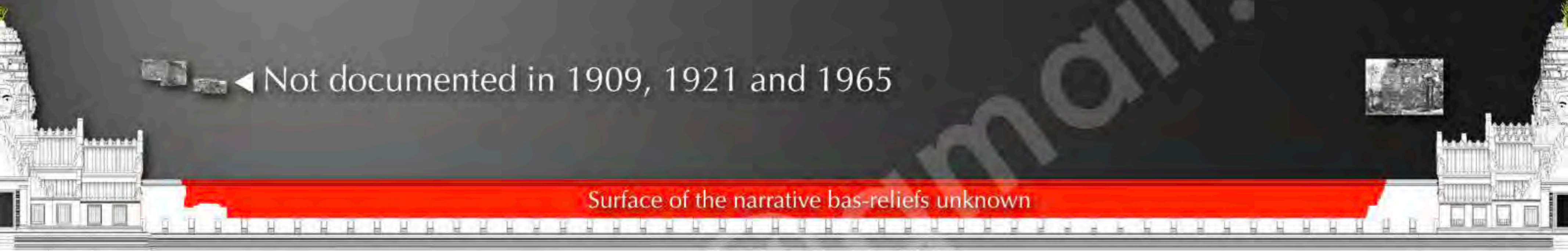
# The 3<sup>rd</sup> enclosure - Southern gallery - East wing



3D scanning by photogrammetry of the West end of the East wing of the Southern gallery  
(These bas-reliefs are not documented at the photos archives of EFEO)

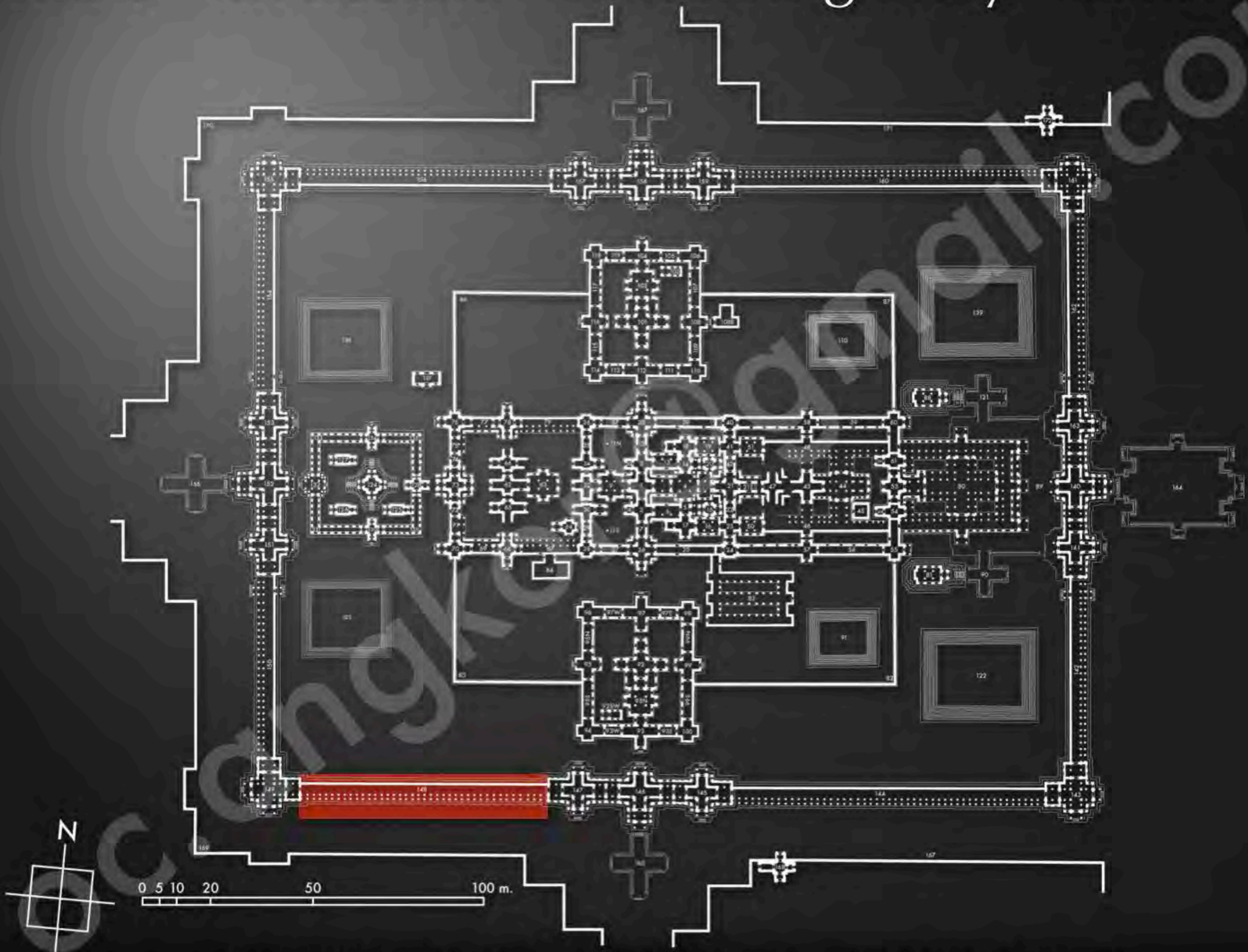
© Olivier Cunin

# The 3<sup>rd</sup> enclosure - Southern gallery - East wing



- 48% of surface of the masonry of the wall of the bas-reliefs are currently collapsed
- 90% of surface of the narrative are unknown and not documented
- Unsafe access for the tourists

# The 3<sup>rd</sup> enclosure - Southern gallery - West wing



General layout of the temple complex of Prasat Banteay Chhmar

# The 3<sup>rd</sup> enclosure - Southern gallery - West wing



Current condition of the West wing of the Southern gallery  
View from East to West (September 2015)



Current condition of the West wing of the Southern gallery  
View from West to East (September 2015)

# The 3<sup>rd</sup> enclosure - Southern gallery - West wing



Condition in 1965 of the East part of the West wing of the Southern gallery  
(Photos of Luc Ionesco from the photos archives of the EFEO)



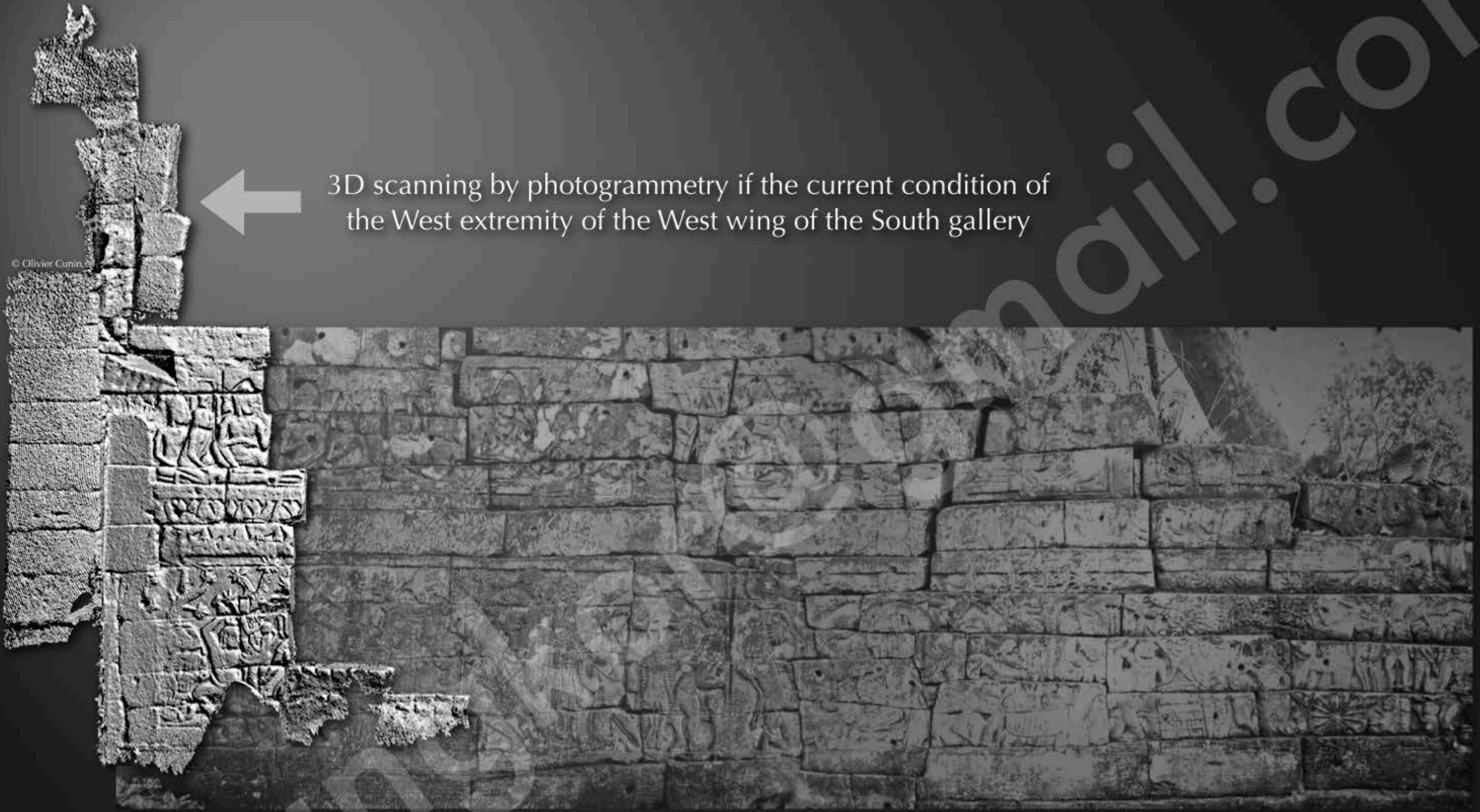
Orthophotography of the condition in 2002 of the East part of the West wing of the Southern gallery

# The 3<sup>rd</sup> enclosure - Southern gallery - West wing



Condition in 1932 of the West end of the West wing of the Southern gallery depicted the "Heavens and Hells"  
(Photomontage of the photos of George Groslier from the National Museum of Cambodia)  
(© MCFA - 123.6+123.12)

# The 3<sup>rd</sup> enclosure - Southern gallery - West wing



3D scanning by photogrammetry of the current condition of the West extremity of the West wing of the South gallery

Condition in 1932 of the West end of the West wing of the Southern gallery depicted the "Heavens and Hells"  
(Photomontage of the photos of George Groslier from the National Museum of Cambodia)  
(© MCFA - 123.6+123.12)



# The 3<sup>rd</sup> enclosure - Southern gallery - West wing



Photo of 12 blocks of the 21 blocks\* buried in the Banteay Chhmar commune and found by the Military Police in October 2002  
(© Christophe Loviny)

\* Source: Christophe Pottier, À propos du temple de Banteay Chmar, Aséanie n°13, Juin 2004, Bangkok, p.146

# The 3<sup>rd</sup> enclosure - Southern gallery - West wing



Current condition of the blocks from the "Heavens and Hells" at the Museum of Banteay Meanchey province

# The 3<sup>rd</sup> enclosure - Southern gallery - West wing



Current condition of the blocks from the "Heavens and Hells" at the Museum of Banteay Meanchey province