

The face towers of the temple complex of Banteay Chhmar



Photo of the South face of tower 78 of the West group of the 2nd enclosure in 1924 by George Groslier

(NMC-MoCFA - 184.11)

The face towers of the temple complex of Banteay Chhmar



Current condition of the South face of tower 78 of the West group of the 2nd enclosure (November 2009)

The face towers of the temple complex of Banteay Chhmar



North face of tower 73 of the West group of the 2nd enclosure
in December 2002



West face of tower 73 of the West group of the 2nd enclosure
in December 2002

The face towers of the temple complex of Banteay Chhmar



View from the Northwest of tower 73 of the Western group of the 2nd enclosure in April 2005

The face towers of the temple complex of Banteay Chhmar



Current condition of the West side of tower 73 of the Western group of the 2nd enclosure (September 2015)

The face towers of the temple complex of Banteay Chhmar



Photo of the tower 70 of the Western of the 2nd enclosure view from the Northwest in 1932 by George Groslier (MCEA - 155.15)



Photo of the tower 70 of the Western of the 2nd enclosure view from the Northwest in 1992 by Christophe Pottier (CP-SRP-27-26)



Current condition of the tower 70 of the Western of the 2nd enclosure view from the Northwest (Septembre 2015)

The face towers of the temple complex of Banteay Chhmar



Current condition of the West side of tower 70 of the Western of the 2nd enclosure (September 2015)



Current condition of the South side of tower 70 of the Western of the 2nd enclosure (September 2015)

The face towers of the temple complex of Banteay Chhmar



Photo of the West face of tower 92 of the Southern group of the 2nd enclosure in 1921 by Henri Parmentier

(© EFEO-PAR01558)

The face towers of the temple complex of Banteay Chhmar



Current condition of the West side of tower 92 of the Southern group of the 2nd enclosure (March 2010)

The face towers of the temple complex of Banteay Chhmar

Face tower	Condition of faces of the towers of the temple complex observable in the beginning of the 20th century				Condition of faces of the towers of the temple complex today			
	East	South	West	North	East	South	West	North
Tower 15	✓	✓	✓	✗	✓	✓	✓	✗
Tower 18	✓	✓	✓	✓	✓	✓	✓	✓
Tower 20	✓	✓	✗	✗	✓	✓	✗	✗
Tower 53	✗	✓	✗	✗	✗	✗	✗	✗
Tower 64	✓	✓	✓	✓	✓	✓	✓	✓
Tower 70	✓	✓	✓	✓	✗	✓	✗	✗
Tower 73	✓	✓	✓	✓	✗	✗	✗	✗
Tower 78	✓	✓	✗	✓	✗	✗	✗	✗
Tower 92	✗	✗	✓	✗	✗	✗	✗	✗

Inventory of the condition of the faces of the towers of the temple complex of Prasat Banteay Chhmar observable in the beginning of the 20th century and today

The face towers of the temple complex of Banteay Chhmar

Face tower	Condition of faces of the towers of the temple complex observable at the beginning of the 20th century				Condition of faces of the towers of the temple complex today			
	East	South	West	North	East	South	West	North
<p>10 faces distributed on 5 towers were lost in the temple complex of Banteay Chhmar between the beginning of the 20th and today</p> <p>3 faces have collapsed during the 1990s and 2 faces fell during the 2000s</p> <p>The last face of tower 70 is in danger and the face tower 64 require conservation work to be kept for the future</p>								
Tower 78	✓	✓	✗	✓	✗	✗	✗	✗
Tower 92	✗	✗	✓	✗	✗	✗	✗	✗

Inventory of the condition of the faces of the towers of the temple complex of Prasat Banteay Chhmar observable at the beginning of the 20th century and today

Typology of the face towers of Banteay Chhmar

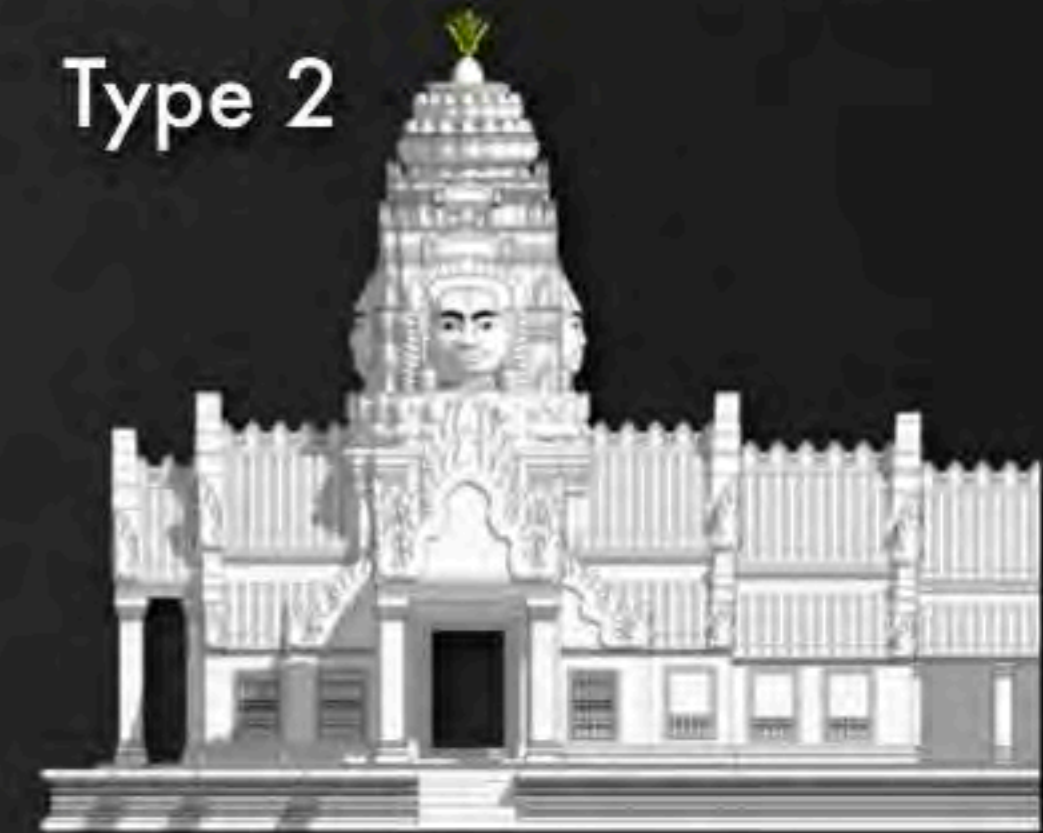


Type 1



Classical face tower surmounted with lotus

Type 2

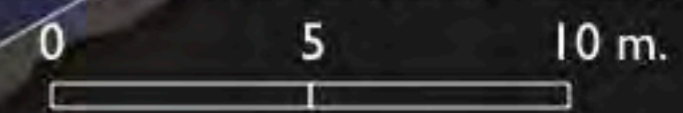


Face towers with worshippers' necklace surmounted with lotus

Type 3



Face towers surmounted with worshippers



Typology of the face towers of Banteay Chhmar

Sanctum towers

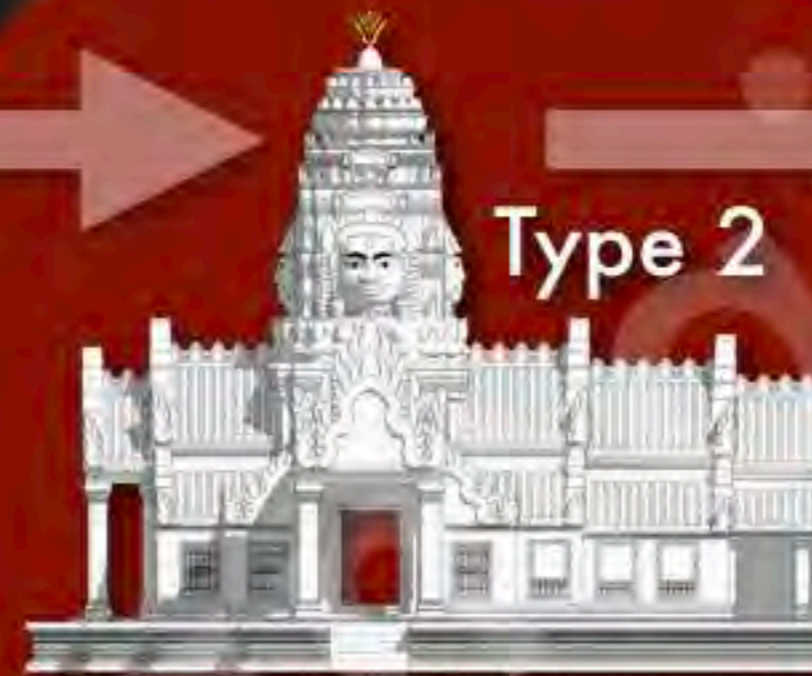
Face tower with lotus crowning



Type 1

Tower BY.19 of Bayon

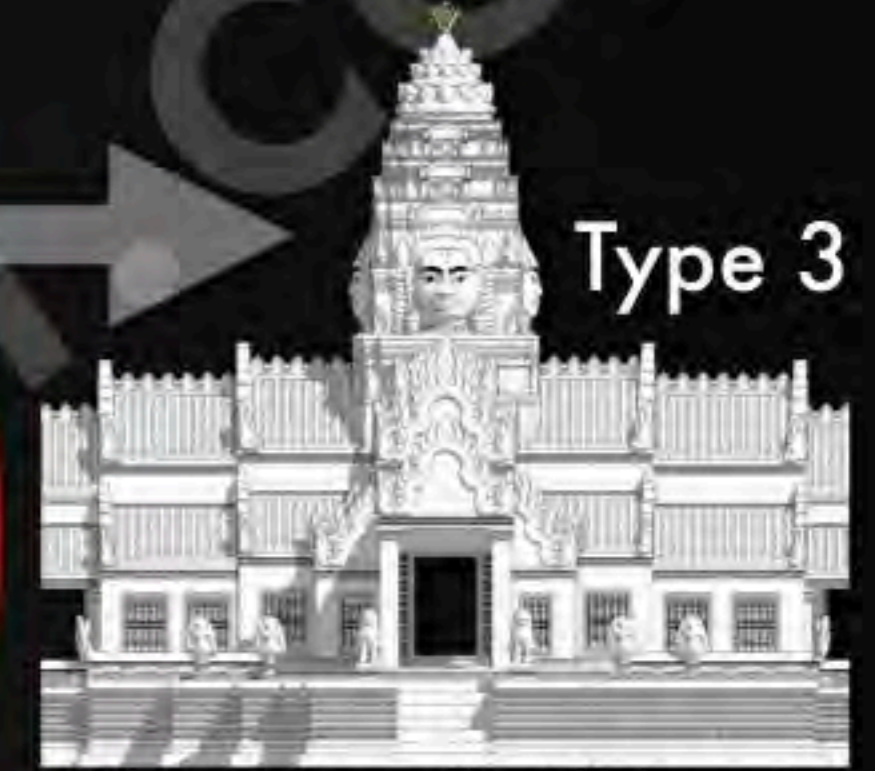
Face tower with lotus crowning and neckless of worshippers



Type 2

Reconstruction of the Southeastern corner pavillon of the 3rd enclosure of Banteay Chhmar

Face tower with crowning with worshippers and angle figures



Type 3

Reconstruction of the Western axis pavillon of the outer gallery of Bayon

Domain Gates

Gate with face with angle element (three-headed elephant), lotus crowning, neckless of worshippers and angle figure



Gate of Angkor Thom

© EFEO

0 5 10 20 m.

Gate with face with angle element (Garuda), lotus crowning, neckless of worshippers and angle figures



Gate of Banteay Kdei

Gate with face and lotus crowning



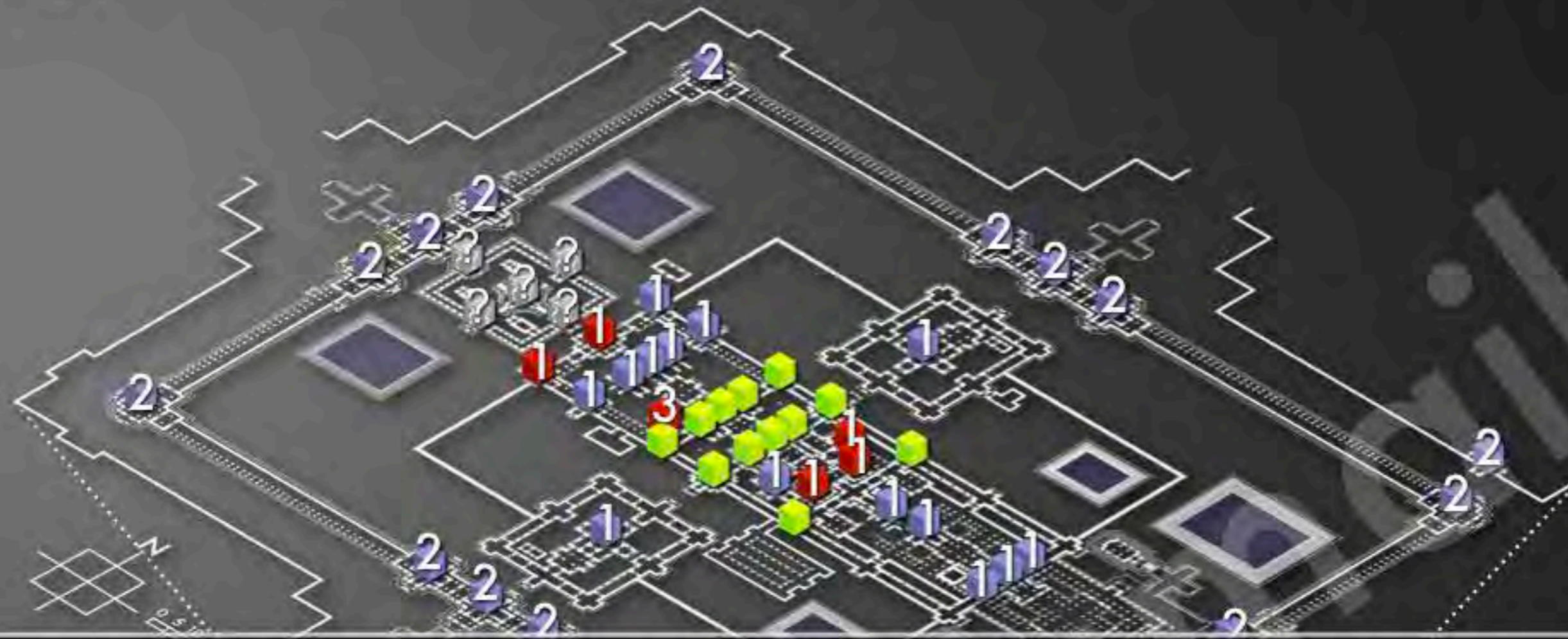
Gate of Ta Som

© EFEO

Banteay Chhmar is the key to the face towers' evolution

Conjectural evolution of the face towers

Typology of the face towers of Banteay Chhmar



Type 1



Classical face tower surmounted with lotus

Prasat Banteay Chhmar had, at least, 50 face towers distributed in 3 typologies during its last construction phase at the beginning of the 13th century

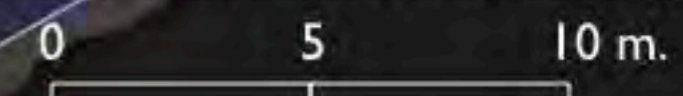


Face towers with worshippers' necklace surmounted with lotus

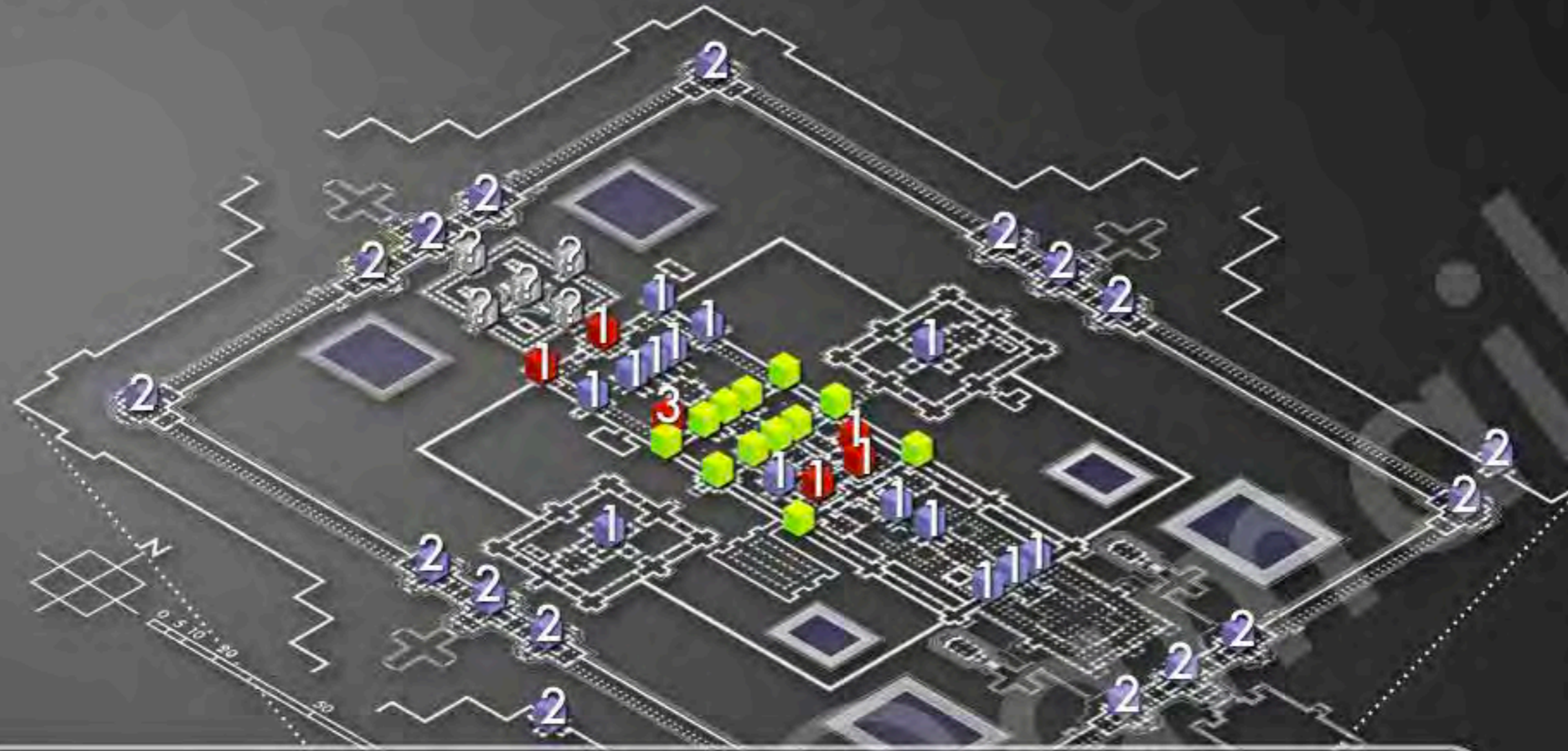
Type 3



Face towers surmounted with worshippers



Typology of the face towers of Banteay Chhmar

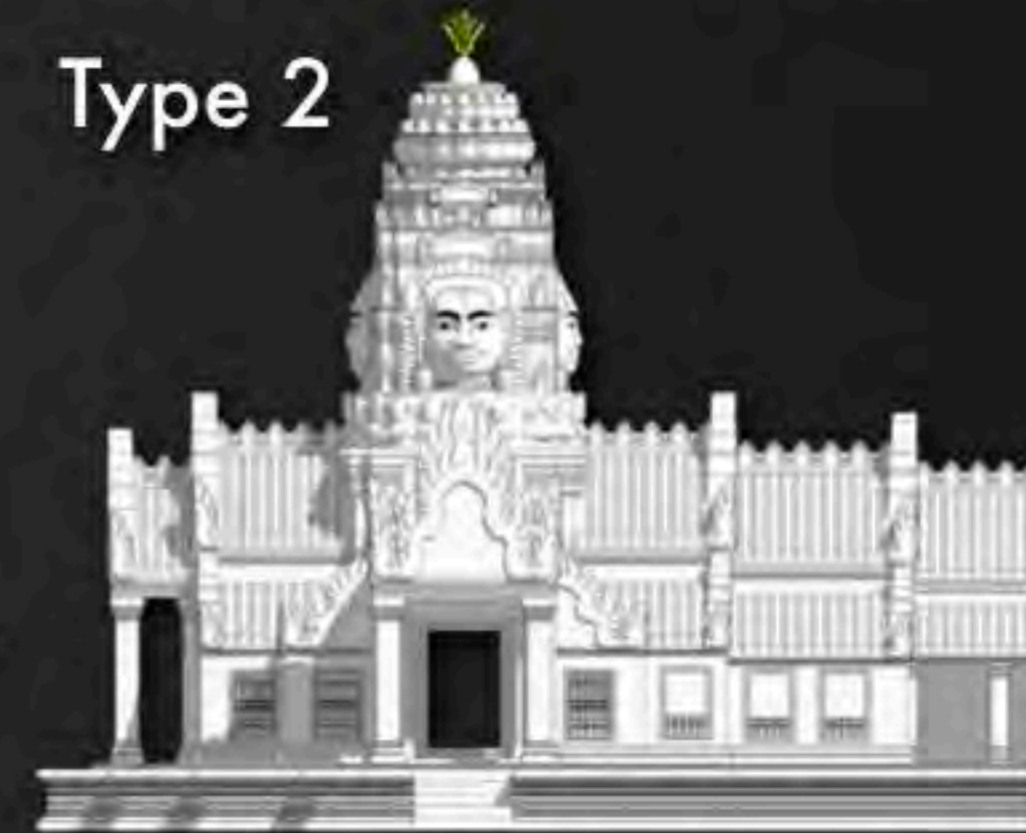


Type 1



Classical face tower surmounted with lotus

Type 2

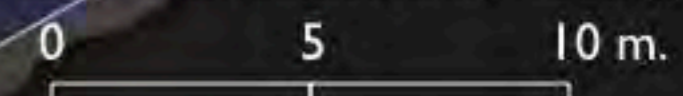


Face towers with worshippers' necklace surmounted with lotus

Type 3

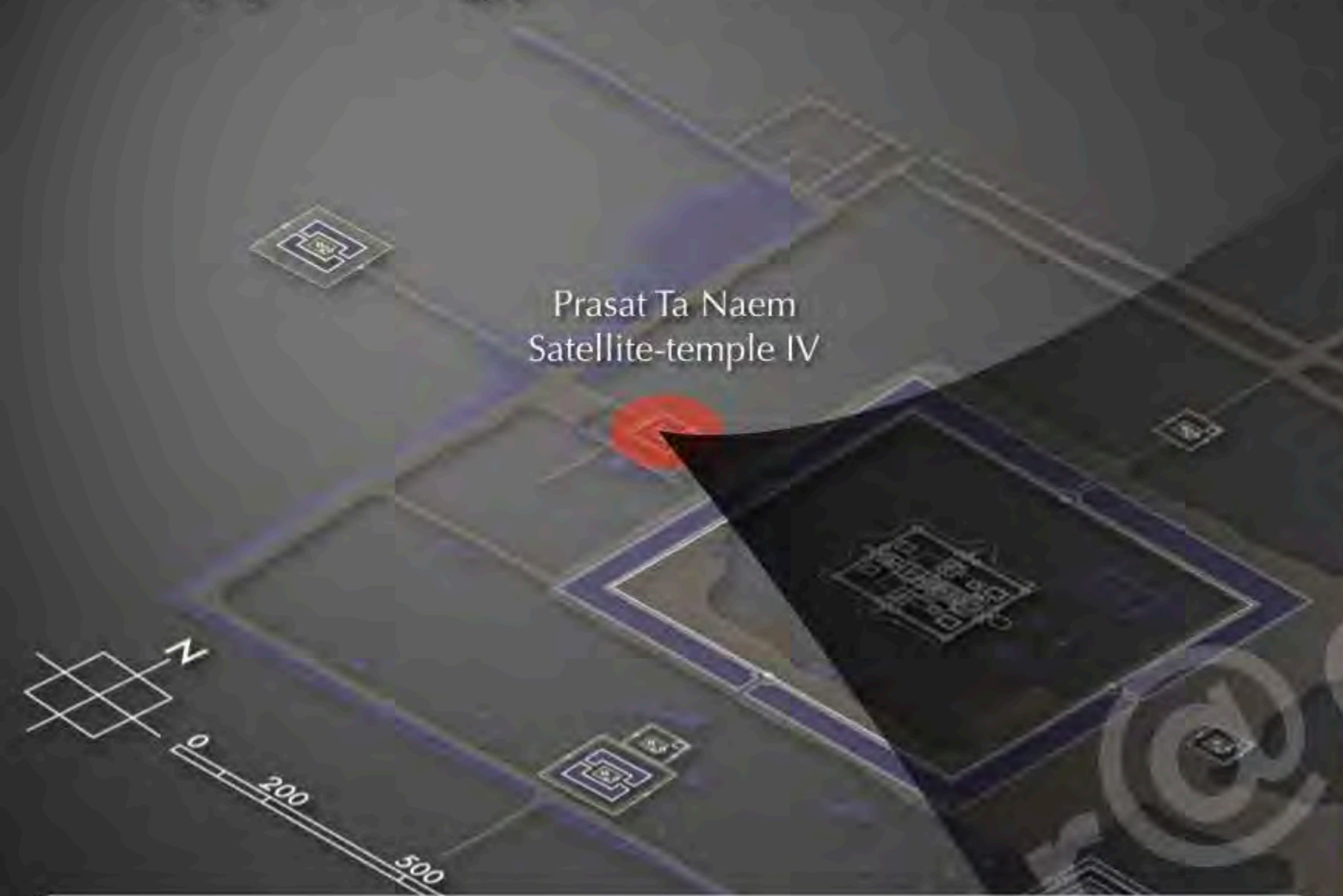


Face towers surmounted with worshippers



The second type of face towers was only built at Banteay Chhmar

Typology of the face towers of Banteay Chhmar



Prasat Ta Naem
Satellite-temple IV

There is only one standing example of the second type of face towers today and two faces are collapsed since the photo of George Groslier in February 1932

The last two faces are in danger



Tower of Prasat Ta Naem
Satellite-temple IV (2007)

The bas-reliefs of the third enclosure of Prasat Banteay Chhmar



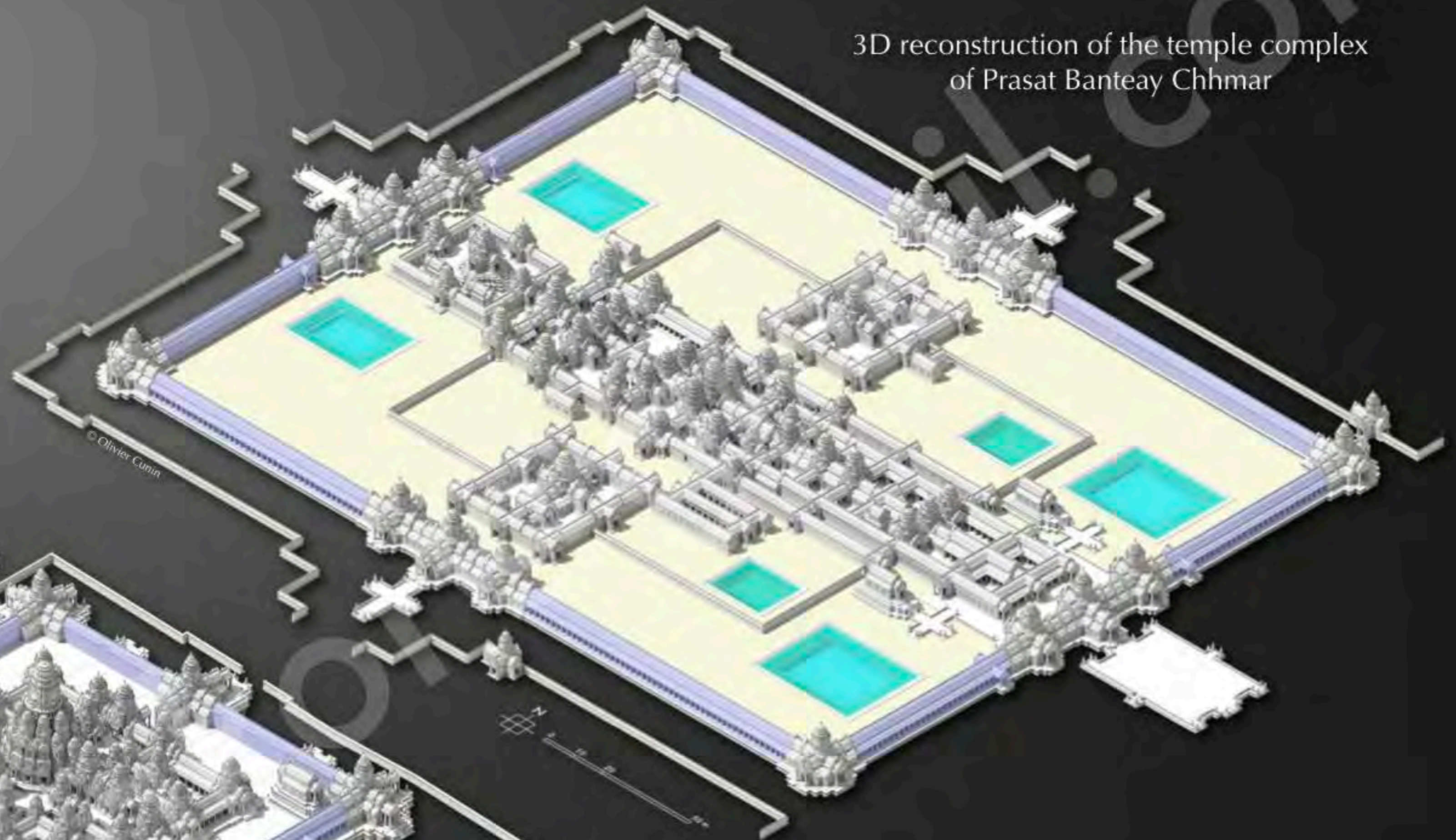
© Olivier Cunin
3D scanning by photogrammetry of the
North end of South wing of the Western gallery

Olivier CUNIN
Ph.D. in architecture - Architect DPLG

Associate researcher of MAP-Crai (UMR 3495 CNRS/MCC), ENSA Nancy and CASE (UMR 8170, CNRS/EHESS)
oc.angkor@gmail.com

The propaganda of king Jayavarman VII

3D reconstruction of the temple complex of Prasat Banteay Chhmar



3D reconstruction of the Bayon of Angkor Thom



Parallel between the Bayon of Angkor Thom and Prasat Banteay Chhmar

The propaganda of king Jayavarman VII



Segment of the 3D scanning of the South wing of the Eastern gallery of the 3rd enclosure of Banteay Chhmar

Segment of the 3D scanning of the central panel of the East wing of the Southern outer gallery of the Bayon

The propaganda of king Jayavarman VII

3D reconstruction of the temple complex of Prasat Banteay Chhmar

The gallery of the 3rd enclosure of temple complex of Banteay Chhmar:

Total linear of linear of bas-reliefs: 538 meters in one or two registers
Total surface of walls until the cornice: around 1758 m²
Total surface of the narative bas-reliefs: around 1224 m²

3D reconstruction of the Bayon of Angkor Thom

The outer gallery of the Bayon:

Total linear of linear of bas-reliefs: 215 meters mainly in three registers
Total surface of walls until the cornice: around 1423 m²
Total surface of the narative bas-reliefs: around 1132 m²

Parallel between the Bayon of Angkor Thom and Prasat Banteay Chhmar

The propaganda of king Jayavarman VII

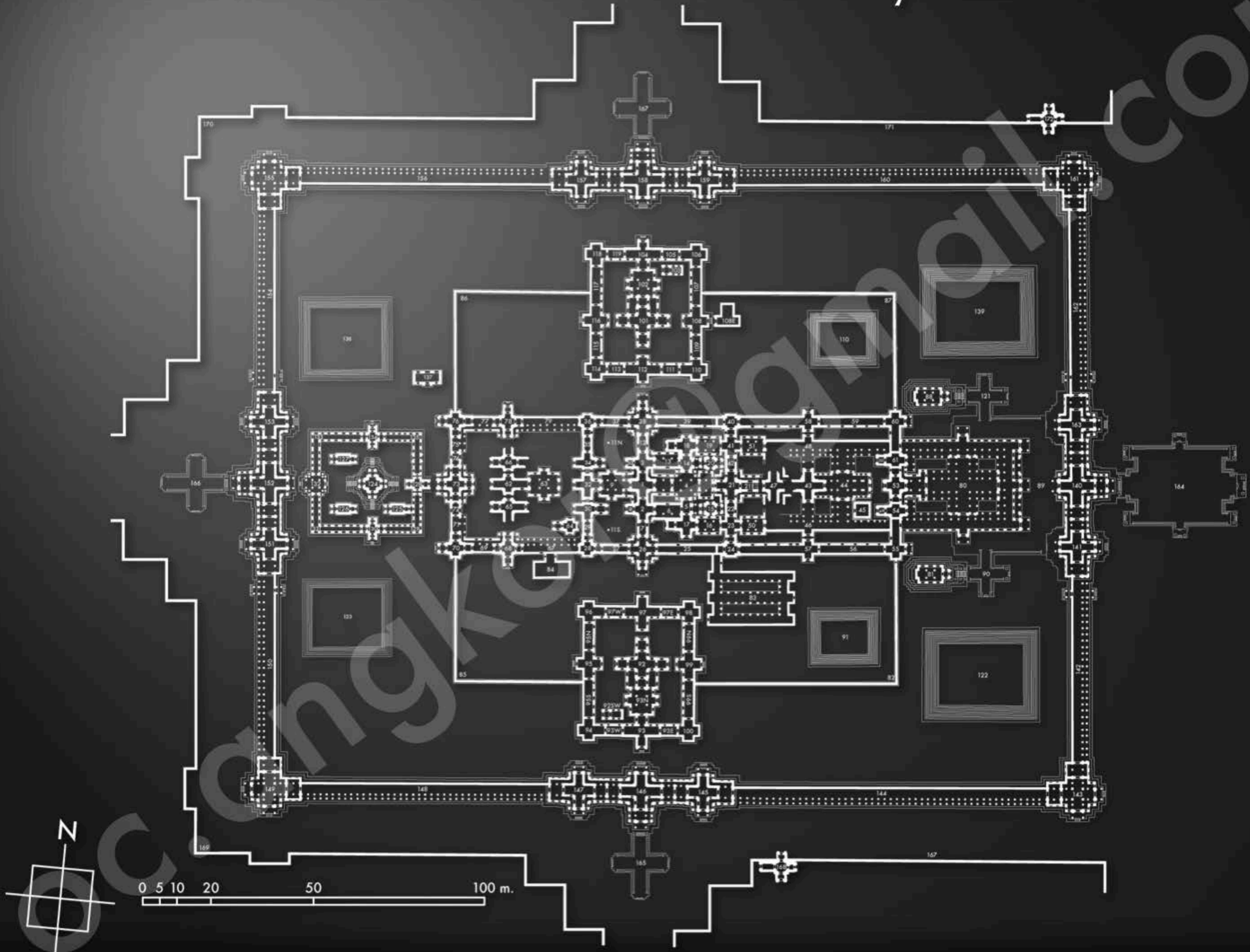
3D reconstruction of the temple complex
of Prasat Banteay Chhmar

The narrative bas-reliefs cover 70% of the walls of the eight wings of the gallery of the 3rd enclosure of Banteay Chhmar, but these narratives are mainly unknown today

The narrative bas-reliefs cover 80% of the walls of the eight wings of the outer gallery of the Bayon, but these narrative are mainly unfinished at the wings of the West side of the temple

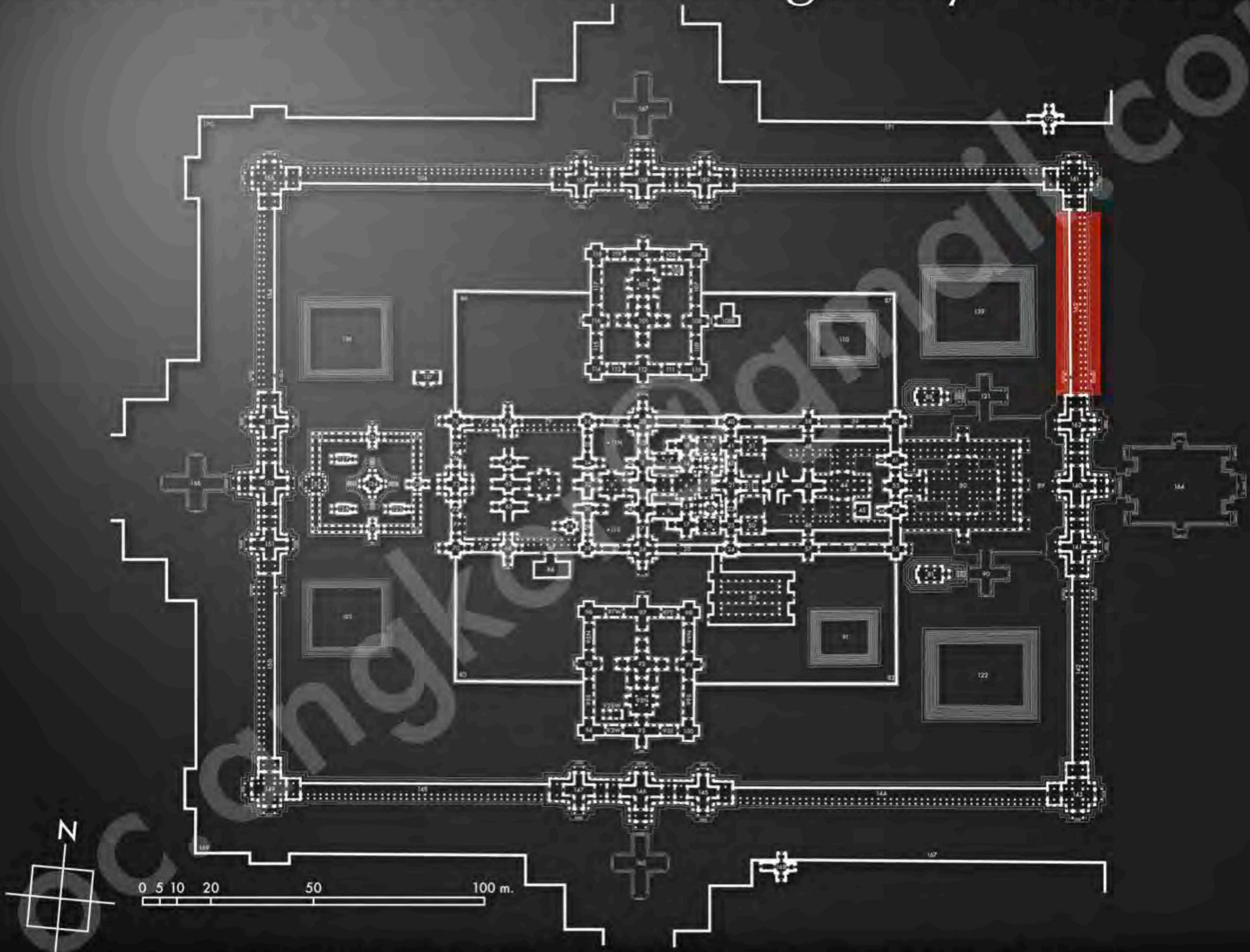
Parallel between the Bayon of Angkor Thom and Prasat Banteay Chhmar

The bas-reliefs of Banteay Chhmar



General layout of the temple complex of Prasat Banteay Chhmar

The 3rd enclosure - Eastern gallery - North wing



General layout of the temple complex of Prasat Banteay Chhmar

The 3rd enclosure - Eastern gallery - North wing



Current condition of the North wing of the Eastern gallery
View from North to South (September 2015)

The 3rd enclosure - Eastern gallery - North wing



3D scanning by photogrammetry of the North end of the North wing of the Eastern gallery
(These bas-reliefs are not documented at the photos archives of EFEO)

The 3rd enclosure - Eastern gallery - North wing



Blocs of the bas-reliefs probably fallen before 1909 of the North wing of the Eastern gallery transferred at the GHF warehouse